

NEWPORT RESTORATION FOUNDATION
2016 ANNUAL REPORT

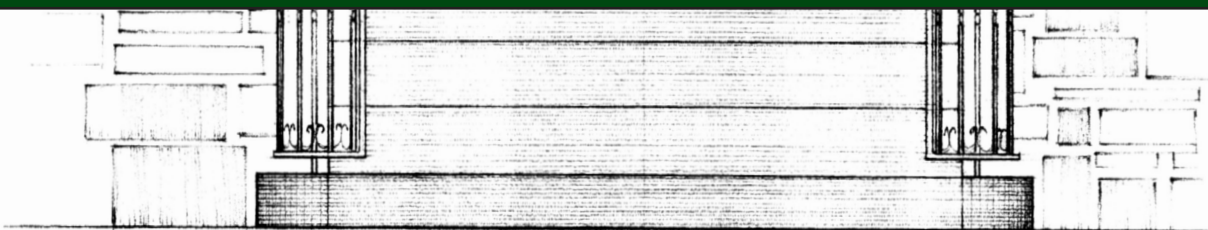




TABLE OF CONTENTS

President's Statement.....	2
Letter from the Director.....	3
Collections	
Rough Point.....	4
Whitehorne House.....	6
Attendance.....	7
Education.....	8
School & Academic Programs.....	9
Graduate Internships.....	9
Public Programs	
Prescott Farm.....	10
Preservation Properties.....	11
Rough Point.....	11
Whitehorne House.....	12
Preservation	
Carpentry & Painting.....	13
Systems.....	14
Landscape.....	15
Marketing	
Media.....	16
Collateral.....	17
Development.....	18
2016 Donors & Supporters.....	19
Finance & Administration	
Profit & Loss.....	20
Income.....	21
Expense.....	22
Investments.....	22
Board & Staff.....	23



PRESIDENT'S STATEMENT



It could be said that FY 2015/2016 has been a turning point in NRF's history. A pivot toward the future, with high expectations based on a new vision for NRF's potential service not only to Newport's history and culture, but to a number of related fields internationally. Thus this annual report is evidence of intent as well as accomplishment.

Springing from a caretaker organization, NRF has become an activist in environmental issues relating to historic preservation and in material culture. We have begun to develop a research initiative that is starting to resonate with collaborators near and far, and to expand related exhibition and education programs. NRF has awakened - staff and Board - to new possibilities of impact derived from our core mission, and the community has responded with increased support to enable NRF to pursue these value-related programs. The Board of Trustees is grateful, as we expand our ambitions, to the many donors who have fed NRF's aspirations. We are also grateful to the staff and volunteers, whose energy, intelligence and perseverance have made this transition year exceptionally productive. This year will be remembered as a turning point in NRF's remarkable history; we hope that Doris Duke would be proud of our expansion of her legacy.

Roger Mandle
President of the Board



LETTER FROM THE DIRECTOR



Many institutions speak figuratively of “weathering the storm”, but rarely do they investigate that practically. This wasn’t our storm, but the world’s. It was a great year for the Foundation in a great many ways, but the launch of our research initiative through a bold new conference, Keeping History Above Water, was a landmark for the organization. We convened 350 people from around the country and around the world to examine, on an unprecedented scale, the impact of climate change on historic preservation.

Through incredibly hard work by the staff, the support of numerous partners and sponsors, and the enthusiastic encouragement of our Board, this conference was a smashing success, with far-reaching benefits. More of the preservation field has begun to consider the impact of this world-changing phenomenon. As a result of the conference, we have been asked to lead the online Knowledge Exchange on Climate Change and Heritage for US/ICOMOS, help the City of Annapolis plan for another iteration of Keeping History Above Water in that city, in 2017, and be part of conferences on the west coast in 2018 and St. Augustine, Florida in 2019.

Clearly NRF touched a nerve. It was our intention to do so, and our research initiative is intended to push the boundaries, offering opportunities for research by resident fellows, symposia, conferences and publications for the general public and the field.

We are growing in other areas as well, with exciting program offerings, including our symposium on Doris Duke’s Islamic Art Collection and the architecture of Shangri La, her house in Hawaii. We are also a proud part of the Newportal effort that has successfully created an online collections database for five Newport institutions. Imminent work will probe much deeper into our collections and tie them to the larger currents of history. We continued in this last year our collaborations with Roger Williams University, Salve Regina University, and the Newport Historical Society, and created new ones with the Union of Concerned Scientists and US/ICOMOS.

All this is in service of a larger mission. Our heritage and our history are a precious commodity. Threats such as climate change are world-changing, but indifference is always the enemy. With all our instant access to knowledge, we still see a troubling decline in heritage awareness, and the emergence of a cultural amnesia. Organizations such as NRF are more needed than ever to heighten that awareness, provide information and immediacy to our cause and contemporary issues.

Doris Duke gave us the raw material and the passion to perform the work we are now engaged in, but producing the financial wherewithal is a brave new world for NRF as there was never any endowment created to support it. This wonderful organization was founded for “preservation for the future” as Chairman Emeritus Oatsie Charles is fond of saying. We intend to live up to it and hope you will join us!

Pieter N. Roos
Executive Director

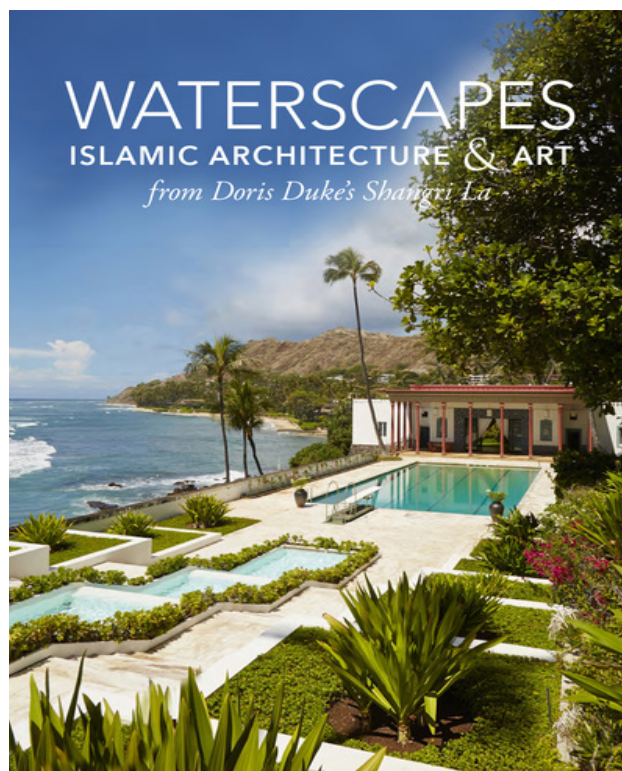


COLLECTIONS

From the excitement of opening *Waterscapes* in cooperation with our sister estate in Honolulu, to delivering loan items to the MFA and the Yale University Art Gallery, to welcoming new and repeat visitors from Winterthur, Waddesdon Manor, and the Frick Collection, NRF continued this year to establish and maintain strong connections regionally, nationally, and internationally. With the launch of Newportal in May (see www.newportalri.org), and the increasing access to our collections online, the hope is for these connections to grow and, in turn, help us to learn more about what we have. This development comes with its own demands, and as external awareness increases, so must our own efforts to add to knowledge of individual items and to ensure their physical safety. That there has been a greater emphasis on research, conservation, and physical environment at our museum properties in this last year should therefore come as no surprise – and these efforts will continue to be imperatives for 2017.

Two areas of research occupied Collections staff in particular in 2016 – Doris Duke as a collector and the provenance of objects at Rough Point and Whitehorne House. Central to this work were visits to the Rubenstein Rare Book and Manuscript Library at Duke University, where the Duke Family papers are housed, and the acquisition of auction catalogues from which purchases were made by either Doris or James and Nanaline Duke.

Another exciting development in support of research was the assessment of the NRF archives with funding from an NEH Preservation Assistance Grant. As a result of this work, we now have a report on the contents and conditions that can be leveraged for further funding to process and make our organizational archives more accessible both to staff and to outside scholars with an interest in the history of the preservation movement in the U.S.



ROUGH POINT

EXHIBITIONS

The 2016 loan exhibition at Rough Point, *Waterscapes: Islamic Architecture and Art from Doris Duke's Shangri La*, on view April through November was seen by over 15,000 visitors. It was a great pleasure to work with Shangri La staff on the exhibition. Strengthened relationships will hopefully mean further collaboration and sharing of information and collections well into the future.

Our exhibition for 2017 will be *Nature Tamed in the Landscape, Gardens and Collections of Rough Point*, an exploration of the history of the grounds alongside fashion and decorative arts inspired by the natural world.



COLLECTIONS

CONSERVATION

2016 conservation projects included stabilization and treatment of two side chairs in the Great Hall and two of the Fables of La Fontaine tapestry chairs in the Music Room. As we close out the year at Rough Point, we will be beginning a capital project to lacquer some of the silver candlesticks and chandeliers in the Great Hall.

By late spring it was clear that one of the late eighteenth-century hand painted Chinese wallpaper panels in the Music Room was in urgent need of repair. The at-risk panel was removed from Rough Point in November and brought to the TKM Associates studio in Somerville, MA for treatment. It will be back in place for the opening of the house in April 2017.

In August a representative from the Royal Manufacturers De Wit, the top conservators for tapestries in Europe, based in Mechelen, Belgium, visited Rough Point to assess the condition of our one seventeenth-century French and nine large sixteenth-century Flemish tapestries and to make treatment proposals for the few in need of significant repair.



LOAN REQUESTS

The eighteenth-century Peruvian mother of pearl secretary bookcase from Doris Duke's bedroom left the Museum of Fine Arts Boston venue of *Made in the Americas: The New World Discovers Asia* in December 2016. It then traveled to the Winterthur Museum, Garden, and Library, Delaware, where the exhibition has been on view since March 15, 2016. It closes in early January 2017 and the desk will return to Rough Point shortly thereafter.

The della Robbia fruit baskets were part of the MFA Boston exhibition *Della Robbia: Sculpting with Color in Renaissance Florence*, which opened in August. The show closes at the MFA on December 4, 2016. It will then travel to the National Gallery in Washington, D.C., but because of exhibition budget and space restraints, our baskets will not be a part of that installation.

*Photographs © Museum of Fine Arts, Boston





COLLECTIONS



WHITEHORNE HOUSE MUSEUM

ACQUISITIONS, CONSERVATION, AND LOAN REQUESTS

Through a connection made by local furniture maker and scholar Jeffrey Greene in 2016, NRF was able to purchase a Job E. Townsend card table from ca. 1810 from a private owner in California. Job E. Townsend is a third generation Newport furniture maker for whom we have little biographical information and no other signed examples of his work. An unusual feature is that the table retains its original paper maker label.

Two pieces from the Whitehorne collection are currently with furniture conservators Fallon and Wilkinson for examination and treatment: a chest of drawers with bun feet made by Job Townsend, and a Rhode Island-made tea table, maker unknown. Both had finish issues to be remedied. The chest of drawers also had old repairs to fix and inappropriate modern brass drawer pulls to replace.

Yale University Art Gallery's exhibition, *Art and Industry in Early America: Rhode Island Furniture 1650-1830*, opened in August 2016 with two items from our collection: a spectacular highboy made by Benjamin Baker and a Carver armchair with cornhusk seat, made in Little Compton. In addition, the exhibition catalogue illustrates several other Whitehorne House items, our Samuel Colman watercolor of John Goddard's shop, and the Christopher Townsend House. The show closes January 8, 2017.

2017 CLOSURE AND "RETHINKING WHITEHORNE"

Whitehorne House, which opened as a museum in 1974, will be closed for regular visits in 2017. During this time NRF staff will be working with colleagues at the Newport Historical Society and the Preservation Society to rethink how the collection is installed and how, by joining forces, we can tell a more compelling story of Newport's eighteenth-century craft traditions. Look for news about the reopening and related developments in spring 2018.



ATTENDANCE

The figures below represent attendance through November but we anticipate that our December numbers for Rough Point and walking tours will bump up total annual attendance to our best year on record. Rough Point is up slightly which is mostly due to increased public programming, and Newport's strong visitation this year. New programming included the resumption of regular family-friendly lawn events in the summer months. Walking tours were also up this year as was "off-site" programming such as specialty Vernon House and 74 Bridge Street tours.

2016 ATTENDANCE JAN - NOV

Site	General Admissions	Group Tours & Programs	Community Programs	School & Youth Groups	Total
Rough Point	12,301	1,665	1,854	394	16,214
Whitehorne	510	48	175	43	776
Prescott Farm	N/A	305	225	104	634
Walking Tours	1,408	24	N/A	0	1,432
Off-Site	N/A	230	642	390	1,262
Totals	14,219	2,272	2,896	931	20,318

2015 ATTENDANCE JAN - NOV

Site	General Admissions	Group Tours & Programs	Community Programs	School & Youth Groups	Total
Rough Point	12,335	1,316	1,555	396	15,602
Whitehorne	605	114	460	21	1,200
Prescott Farm	N/A	75	526	81	682
Walking Tours	1,219	35	N/A	15	1,269
Off-Site	N/A	62	300	279	641
Totals	14,159	1,602	2,841	792	19,394



EDUCATION

The Keeping History Above Water (KHAW) conference was the programmatic centerpiece to our year, and yielded long-lasting results. We welcomed 350 attendees from across the country and around the world to Newport in April, and have maintained and deepened relationships that started there.

In the months since the conference, we've assembled a team for the conference publication to be co-edited by Shanti Anderheggen and Jeremy Wells. Rather than a conventional conference proceedings, this publication will serve as a foundational text built around the predominant themes that emerged over the four days of the conference.

With our partners at Union Studio and BCA Inc., and with funding from RIHPHC, NRF has produced a 40-page booklet on the 74 Bridge Street resiliency case study. *Keeping 74 Bridge Street Above Water* distills the lessons from the City of Newport and the Point Neighborhood on protecting historic structures and neighborhoods from the impacts of climate change. The booklet is available for download at www.HistoryAboveWater.org. Hard copies are available upon request, free of charge. The exhibition and booklet were awarded a 2016 Urbanism Award by the New England Chapter of the Congress for New Urbanism.

Plans are already under way for KHAW II in Annapolis, MD, in November 2017, under the leadership of Lisa Craig, KHAW speaker and Chief of Historic Preservation for the City of Annapolis. Interest has also been expressed by a couple other speakers in organizing a West Coast edition.

Yet another outcome from KHAW, NRF is partnering with US/ICOMOS to develop and maintain their virtual Knowledge Exchange on Climate Change and Heritage – a site designed to connect US practitioners to the international community of interest around these topics. Together with the help of graduate interns, we're sourcing and sharing resources related to climate change and cultural heritage on social media, the US/ICOMOS website, and HistoryAboveWater.org.





SCHOOL & ACADEMIC PROGRAMS

University Partnerships: During the spring semester, a small graduate seminar from Roger Williams University's School of Architecture, Art, and Historic Preservation looked at Prescott Farm as a site for expanded public use. Under Professor Jeremy Wells' direction, the students researched past use of the site, benchmarked comparable historic sites in the northeast, conducted a public workshop to solicit input about possible future use, and compiled a report entitled "The Future of Prescott Farm." This document is informing the work of the NRF Prescott Farm Subcommittee of the NRF's Education Committee.

This fall, Prescott Farm has also served as the community site for an undergraduate course in soil ecology at Roger Williams University. Professor Loren Byrne's students are studying the ecology of and performing bacterial analysis on samples from the northernmost field on the property.

For the second year this October, NRF partnered with Salve Regina University's Cultural and Historic Preservation Program on their annual preservation conference, which this year focused on the 50th anniversary of the National Historic Preservation Act.

Public School Partnerships: For the ninth year, NRF was the beneficiary of a grant from the Newport Public Education Foundation. This year's grant funded Rough Point visits for over 340 students from Newport Public School 4th grade, 8th grade, and high school art classes. We entertained new audiences at Prescott Farm this season with additional 4th grade visits from Portsmouth schools.

GRADUATE INTERNSHIPS

Exhibition Intern 2016

Christina Ho (January-May 2016)
Brown University, John Nicholas Brown Center for Public Humanities
MA candidate, Public Humanities
Project: Digital media editing and support of *Waterscapes* exhibition

NRF-US/ICOMOS Interns Fall 2016

Alanna Casey (September-December 2016)
University of Rhode Island
PhD candidate, Marine Affairs
&
Julianne Fontana (September-December 2016)
Brown University, John Nicholas Brown Center for Public Humanities
MA candidate, Public Humanities

Project: Support of NRF & US/ICOMOS virtual "Knowledge Exchange" on climate and cultural heritage, including social media management, research and writing on selected topics, and development of news and resources for HistoryAboveWater.org.

Emily Laird Fellow in Museum Studies 2016

Mical Tawney (June-August 2016)
University of Virginia, School of Architecture
MA candidate, Architectural History
Project: Reworking of preservation property descriptions and reorganization of information for NRF website; support of Education and Curatorial department activities

Student Projects

Alex Papo (September-December 2016)
Roger Williams University, School of Architecture, Art, and Historic Preservation
MA candidate, Historic Preservation
Project: master's thesis exploring the development of a framework for measuring coastal community resiliency

Matt Bonner (June-August 2016)
Senior, North Kingstown High School
Reached out to NRF seeking experience with museum public programs prior to college; volunteered his time and assisted with visitor wayfinding and take-down at public programs at Prescott Farm, Whitehorne and Rough Point over the summer.



PUBLIC PROGRAMS

PUBLIC PROGRAMS BY LOCATION

PRESCOTT FARM

- “Thomas Jefferson’s Revolutionary Garden,” lecture and book signing with Peter Hatch, Director of Gardens and Grounds Emeritus, Thomas Jefferson Foundation, in partnership with URI Master Gardeners (at URI, April)
- Master Gardener Help and Soil Testing - Sundays, April-September, in partnership with URI Master Gardeners
- Windmill Wednesdays - Last Wednesday of the month, June-August
- URI Master Gardener Project Open House (August)
- Road Scholar tours exploring colonial foodways and the history of wind energy on Aquidneck Island (August-September)
- Stone Wall Workshop (October)





PUBLIC PROGRAMS

PUBLIC PROGRAMS BY LOCATION

ROUGH POINT

- 74 Bridge Street Project Charrette (January)
- Sip and Sculpt art workshop (March)
- Exhibition Preview Party (April)
- Self-guided tours of *Waterscapes: Islamic Architecture & Art from Doris Duke's Shangri La* –Saturday Afternoons, April-November
- Speaker thank you dinner and donor cultivation event in conjunction with KHAW conference (April)
- Beethoven with Burgundy concert in partnership with The Newport String Project (April)
- Landscape History and Garden Tours – twice monthly, May-September
- Rough Point Beyond the Tour series–twice monthly, May, September, October
- Rough Point After Hours: Sights and Sounds of Shangri La Series–once monthly, June-August
- Doris Duke Historic Preservation Awards in partnership with the City of Newport (September)
- “To Catch a Glimpse: The Newport Life of Doris Duke” lecture (September)
- “Into the Sea” film screening (September)
- Collecting Paradise symposium (October)
- The Rough Point gardens were a featured stop on the fall Secret Garden Tours
- UnDecked Halls (December)
- Curator tours provided for participants in the Preservation Society’s Symposium, Newport Art Museum’s MUSE class
- Tour of Rough Point mechanical systems for students in Roger Williams engineering program





PUBLIC PROGRAMS

PUBLIC PROGRAMS BY LOCATION

PRESERVATION PROPERTIES AND OFF-SITE PROGRAMS

- Keeping History Above Water conference (April)
- Noreen Stonor Drexel Cultural and Historic Preservation Conference, in partnership with Salve Regina University (October)
- Gilded Metropolis Study Day in partnership with The Preservation Society of Newport County, The Newport Historical Society, and the Newport Art Museum (October)
- Walking Tours in partnership with Newport Historical Society (February-December)
- Tours of Christopher Townsend House as part of KHAUW conference and historical walking tours
- Tours of the William Vernon House as part of architectural and historical walking tours and for scholarly groups



WHITEHORNE HOUSE MUSEUM

- Gallery Night at Whitehorne House—second Thursday of the month, June-August
- Christmas with the Whitehornes in partnership with the Newport Historical Society (December)
- Private tours were hosted for Yale University Art Gallery, MUSE students, Roger Williams students, Historic Deerfield summer fellows





PRESERVATION

This year, Robert Foley retired from the Director of Preservation position after a lifelong career shaping historic preservation in Newport. As a final farewell Robert was honored with the Frederick C. Williamson Award for lifetime professional service by the Rhode Island Historic Preservation and Heritage Commission. Shantia Anderheggen joined the NRF as the new Director of Preservation where she brings 25 years of experience to shape programs and initiatives related to the preservation advocacy and the promotion of NRF's mission in preserving, interpreting, and maintaining Aquidneck Island's 18th-and 19th-century architectural heritage. In addition the crew was reorganized and Sean Sullivan was named as the Foreman, a position that has not been filled for over thirty years. Sean brings twenty-eight years of preservation experience at NRF to the position.

CARPENTRY & PAINTING

GENERAL EXTERIOR REPAIRS AND ROOFING

Various repairs, both small and larger-scale, were undertaken at the following properties: the Overing and Almy-Cory houses (Prescott Farm, see below), 35 Washington, 51 Bridge, 31 Walnut, 18 Thames, and 58 Thames.

The Almy-Cory House required significant repairs this year, including full window frame replacement. The 2005 restoration project utilized eastern white pine--fast growth pine that rotted far sooner than anticipated.

Several roofs were replaced, as follows: Overing House (Prescott Farm), 18 Thames, and 35 Washington (in progress). Initial slate roof repairs were undertaken at the Vernon House, as suggested in the Historic Structures Report. In the process, damage at the roof sheathing and structure was discovered and plans are being made to address these conditions.



STORM WINDOWS

NRF contracted with the Lightship Group in Davisville, RI to reproduce (through fabrication) 250 pairs of storm window hardware to match NRF's original style. This new hardware, once installed, will save the crew many hours over the coming years when installing storm windows.

INTERIOR PROJECTS

The NRF crew has begun to replace damaged or rotted countertops using synthetic "Corian" marble. This plan will save significantly on the labor and material costs related to on-going maintenance while adding value and "curb appeal" to the houses. As kitchen countertops age, they will be replaced using soapstone or possibly a synthetic material. While the existing wood countertops add charm to the kitchens (and sometimes bathrooms), they are not practical in a rental house environment. The on-going cost of maintenance and replacement wood countertops will be eliminated and the new materials will be more appealing to tenants. The following houses have had wood countertops replaced with soapstone: 11 Third and 55 Thames.



MAJOR WINDOW PROJECTS

At the Whitehorne House, a plan for the replacement of the failing ca.1980s reproduction sash windows has been developed, with costs determined, a timeline has been established and the temporary sash needed for the project fabricated. This work will be phased and is anticipated to go through 2018. At the Vernon House, the sash window replacement project has been re-scoped and approved by the state granting agency (Rhode Island Historical Preservation and Heritage Commission); the new scope retains and repairs the majority of the existing historic windows. The work will be done in-house and is slated to conclude by April 2017.

KEEPING HISTORY ABOVE WATER

NRF's carpentry crew fabricated twelve wall sections for the KHAW exhibit and installed them at 74 Bridge St. The exhibit was subsequently transported and assembled at Union Studios in Providence and then at Roger Williams University in Bristol.

Exteriors of ten houses were re-painted in 2016. Other projects include painting for the annual Rough Point exhibition, work for the panels for the Keeping History Above Water exhibit. When properties change tenants, the paint crew undertakes interior work, and in 2016, seven interiors saw their interiors re-freshed. Upcoming turnovers include Almy-Cory, Prescott Barn and Goudie Cottage (all at Prescott Farm) and 428 Thames.

SYSTEMS

The NRF is currently converting residential boilers to Navian high-efficiency condensing boilers, and completed three of them this year. We are also upgrading and replacing residential service panels, replacing outdated service equipment and service cables.

At the Whitehorne House, the 30-year-old residential fire alarm was replaced with a new code-compliant commercial system; the outdated wireless residential security system was replaced with new advanced Bosch hard-wired integrated security system; a remote monitoring climate control system was installed.

At Rough Point, the major work involved a completely new HVAC system; removed and relocated chillers; installed coastal compliant Evapco all stainless steel cooling tower; removed two separate heating plants, combining them into one new high-efficiency top down non-condensating P&K boiler package consisting of two boilers capable of alternating use or in high use times running simultaneously; installed climate control upgrade package allowing for smarter control of occupied spaces by incorporating sensors and stainless steel modulating louver intakes to better control collection spaces intake air; installed four in-line humidifiers covering all formal collection spaces in conjunction with smarter and more sensitive climate control sensors.



LANDSCAPE

The landscape crew maintains several of NRF's properties, including Rough Point, Prescott Farm, Whitehorne House, 51 Touro Street and 74 Bridge Street. The landscapes of certain preservation properties are also attended to by the landscape crew, including those properties that need tree work or are vacant.

At Rough Point, numerous projects were undertaken this year, including the application of new gravel over at the driveways, new sod and shrubs planted at the north and south parking areas and to the east side of the front doorway.

At Prescott Farm, almost all of the borders were cleaned up over the winter (including paths in the woods). Fruit trees were pruned and storm damage addressed. Repairs were undertaken to the property's tractor. Miscellaneous masonry repairs were undertaken, including failing section of stone wall around the west pond.

At the Preservation Properties, tree work (both in-house and contracted out) was undertaken at 15 Mill, 6 Cross, 49 Mill, 51 Bridge, 58 Thames, 55 Second, 25 Walnut, 48 Pelham and Vernon House. Other projects include work at 51 Touro (grading), 51 Bridge (paving and steel edging), 55 Thames (lawn repairs), 30 Walnut (transplanting), 16 Dennison (planting), 428 Thames (lawn repair) and 25 Walnut (reset bluestone). Other general maintenance was performed at 109 Spring, 29 Green, 428 Thames, 6 Bridge, 51 Touro and Whitehorne House. Miscellaneous work included resetting brick and bluestone masonry at Queen Anne Square. Finally, the landscape crew presented two public programs, a tour and talk about the history of gardening at Newport estates; and a walking tour at Ballard Park.





MARKETING

MEDIA

A significant project this past year was the press management and promotion for the Keeping History Above Water conference in April 2016. Media coverage included several publications and news outlets such as *The Atlantic*, *The Associate Press*, *The Providence Journal*, *The New England Museum Association* and RINPR. We continue to contribute to the global conversation around climate change and cultural heritage via the NRF - US/ICOMOS partnership. Also, this year the website www.HistoryAboveWater.org earned first place for websites in the 2016 NEMA Publication Awards.

In addition to media coverage for the conference, NRF received press through a solid mix of channels. NRF's unique tenant-steward program was featured in *Preservation's* Winter 2016 issue and *This Old House Magazine's* November/December 2016 issue where 88 Bridge Street was featured on the front cover. We also received coverage from local media outlets such as the *Providence Journal*, *PBN*, *Newport Patch* and *Newport This Week* when former Director of Preservation, Robert Foley, received the Frederick C. Williamson Professional Leadership Award (also called a Rhody Award) from Preserve Rhode Island. And finally, another media item to note was a television segment with *Chronicle* on WCVB Channel 5 in Massachusetts that aired in November. The segment was about the history of Aquidneck Island and featured four of their favorite destinations which included Prescott Farm.



COUNTDOWN TO MARRAKECH

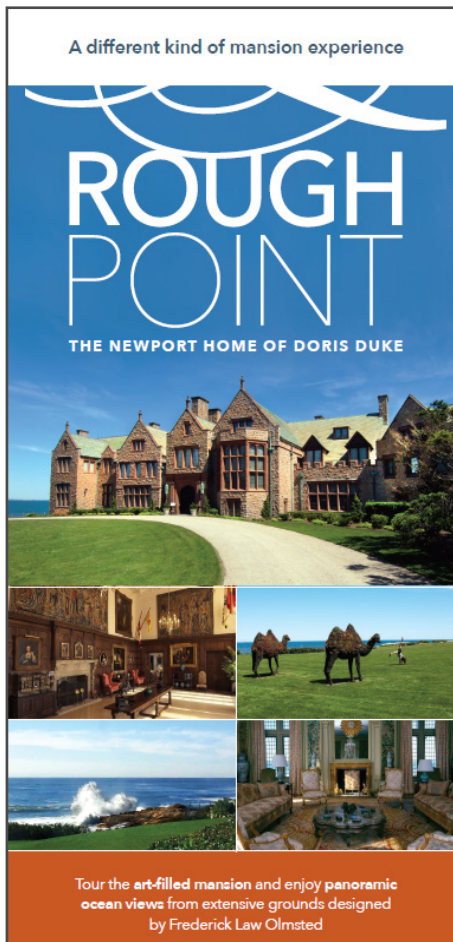




MARKETING

COLLATERAL

Collateral pieces this year included a newly designed rack card for Rough Point and direct mailers for summer and fall programs. We also designed new print and digital ads for a variety of local and regional publications.



RACK CARD



DIRECT MAILER



ADVERTISEMENT

When a new Director of Development joins the staff, Marketing will work very closely with them to create effective messaging and collateral that aligns with the overall branding of the organization. A new Marketing Coordinator, Meaghan Barry, was hired on September 26th. Meaghan's background in non-profit marketing and fundraising made her a natural choice and we look forward to her contributions.



DEVELOPMENT

2016 has been an exciting year for NRF. After months of serious discussions and planning, NRF is embarking on a new initiative to take a leading role in shaping the future of American historic preservation practice and philosophy. This research initiative has as its goal to create more widespread recognition for the value of historic preservation and for the critical role it can play in responding to economic and environmental threats. Our first program, the international conference Keeping History Above Water (KHAW), was a huge success and has set a high standard for things to come.

In order to fund future research efforts, it was necessary to create a formal fundraising department. Sarah Reusche was hired in April with half of her time dedicated to development. She was instrumental in establishing both a database and development infrastructure. We executed the 10th Annual Doris Duke Preservations Awards, applied for grants, and sent out our first annual appeal. A Development Director will start in 2017 and work will begin to continue raising the funds necessary to meet the goals of the research effort. We have a lot to look forward to.



Thank you to all our donors and supporters for your generosity.

Number of Donors	Number of Gifts	Total Received	Average Gift
157	182	\$149,960	\$824

10TH ANNUAL DORIS DUKE PRESERVATION AWARDS





2016 DONORS & SUPPORTERS

AIG	Dr. and Mrs. Edwin G. Fischer	Dr. Holly M. Bannister and Mr. Douglas L. Newhouse
Ms. Alexandra Allardt	Mr. and Mrs. David B. Ford	NewPort Architecture LLC
Mr. and Mrs. Armin Allen	Mr. Robert Galkin	The Newport Image
Anonymous	Galkin Private Foundation	Ms. Cynthia O'Malley
Anonymous in memory of Mr. Ronnie Perry	Mr. and Mrs. G. Stanton Geary	Mr. and Mrs. Paul O'Reilly
AR-Global	Mr. and Mrs. Thomas P. I. Goddard	Mrs. Ruth Orthwein
Ms. Ann Arnold	Mr. and Mrs. David Gordon	Senator M. Teresa Paiva Weed
Atelier Newport	Mr. and Mrs. Sidney S. Gorham, III	Mr. Joseph R. Paolino, Jr.
Mr. and Mrs. John Bach-Sorenson	Gustave White Sotheby's International Realty	Partners in Philanthropy, LLC
Mr. and Mrs. Michael Balasco	Ms. Cecelia E Hallahan	Paul F. Weber - Architect LLC
Mr. Greyson Baldaro	Mr. Richard Harris	Ms. Diana Pearson in memory of Mr. Nicholas B. Scheetz
Mr. Lockett Ford Ballard, Jr.	Mr. John D. Harris, II and Ms. Linda Sawyer	Mr. and Mrs. David Pedrick
Bank Newport	Ms. Mary Hastings	Mr. and Mrs. George Petrovas
Mr. Ian Barnacle	Mr. and Mrs. Peter Hatfield	The Point Association of Newport
Behan Bros., Inc.	Ms. Donna Heroux-Everson	Mr. R. Daniel Prentiss
Mr. Mortimer Berkowitz III	Mr. and Mrs. George Gardner Herrick	Ms. Lisette Prince de Ramel
Berwind Fund LLC	Ms. Katherine Hoepfner-Karle	Mr. and Mrs. John Purdy
Ms. Sallie Bingham	Home and Commercial Security	Mr. Glen Pyewell
Ms. Joyce Botelho	Ms. Stefani Hulitar	Mr. and Mrs. Frank N. Ray
Bowen's Wharf Co.	Mrs. Linda Dillon Iribarren	The Rev. Canon Anne Marie Richards and Mr. Brook Richards
Mr. James B. Boyd	Ms. Mary Jennings	Roger Williams University
Ms. Erin Boyle	Ms. Charlotte Johnson	Mr. and Mrs. Pieter N. Roos
Mr. and Mrs. Mark Brice	Rev. Mary Johnstone and Mr. Robert L. Johnstone	Mr. and Mrs. Harald Rosengren
Capt. and Mrs. Nicholas Brown	Joseph Gnazzo Company	Mr. and Mrs. James H. Ross
Mr. and Mrs. Richard I. Burnham	Mr. and Mrs. William Kahane	Salve Regina University
Mr. and Mrs. Ross S. Cann, Jr.	Ms. Dodie Kazanjian and Mr. Calvin Tomkins	Ms. Joanna Salvo
Ms. Mary Case	Mr. Thomas Kennedy	Sandra Liotus Lighting Design
The Chad Kritzas Team at Keller Williams	Mr. Alexander King	Mr. and Mrs. Kenneth Scigulinsky
Mrs. Marion O. Charles	Kirby Perkins Construction	Maj. Gen. and Mrs. Stephen R. Seiter
Mrs. E. Taylor Chewning	Mr. and Mrs. Steven A. Kumble	Ms. Belinda Shepard
Mr. Donald C. Christ	William and Elizabeth Leatherman	Mr. Jeffrey Siegal
Mrs. Juliette Clagett McLennan	Mr. David Lepore	Slocum, Gordon & Co. LLP
Mr. and Mrs. George Clarke	Mr. William Letoile	Ms. Marcy Snapp
Mrs. Bernadette Marie Colborn	LGC and D Wealth Management	Mr. Bagwill and Ms. Stafford
Mr. and Mrs. Robert B. Conner	Ms. Barbara Lloyd	Mr. and Mrs. John Stokes
Mr. Edward Connolly	Mr. Richard C. Loebs, Jr.	Ms. Gladys V. Szapary
Mr. Richard Crisson	Ms. Polly Lyman	Ruth and Adams Taylor
Mrs. Norey D. Cullen	Ms. Joan Malkovich	Amb. and Mrs. Paul Taylor
Ms. Susan Curley	Dr. and Mrs. E. Roger Mandle	Mr. David Thalmann
Ms. Virginia F Decker	Ms. Nancy R. Starr and Mr. Philip C. Marshall	Mrs. Barbara J. Thornton
Mrs. Ronald F. Dick	Ms. Edith McBean	Mrs. Harle Tinney
Ms. Norah Diedrich	Mr. and Mrs. Joseph and Gloria McCarthy	Mr. Randy J. Tryon
Doris Duke Charitable Foundation	Mrs. Joseph F. Mele	Mrs. John A. van Beuren
Durkee Brown Vivieros & Werenfels Architects	Mr. and Mrs. Samuel Mencoff	Mr. William Vareika
Mr. Daniel F. Dwyer, III	Mr. Pierre F. V. Merle	Mr. and Mrs. Bruce Watts
Ms. Florence Everett	Ms. Catherine Milinaire Cushing	Capt. Charles Weishar
Dr. and Mrs. Donald Farish	Mr. Robert Millar	Dr. Linda Welters
Farrar & Associates, Inc.	Mr. Barbara Miller	Ms. Martha Werenfels
Mr. and Mrs. Stephen Fasano	Mrs. Kiki Mitchell	
Mr. Steven Fielding and Ms. Christine MacDonald	National Center for Preservation Technology and Training	



FINANCE & ADMINISTRATION

This year included many financial achievements for the Foundation, from pulling off our first major conference, to substantially increasing rents to meet fair market value, to celebrating our 10th annual Doris Duke Preservation Awards fundraiser, and mailing off our first ever annual appeal.

PROFIT & LOSS

Newport Restoration Foundation Profit & Loss Projected Year End 2016

(January - September actuals with projected last quarter)

Income	2016
Program Receipts	51,122
Rental Income	1,948,492
Admission	313,991
Grant Receipts	164,083
DDCF Receipts	2,937,000
Donation Receipts	35,187
Fundraiser Receipts	120,582
Miscellaneous Income	38,277
Total Income	5,606,734

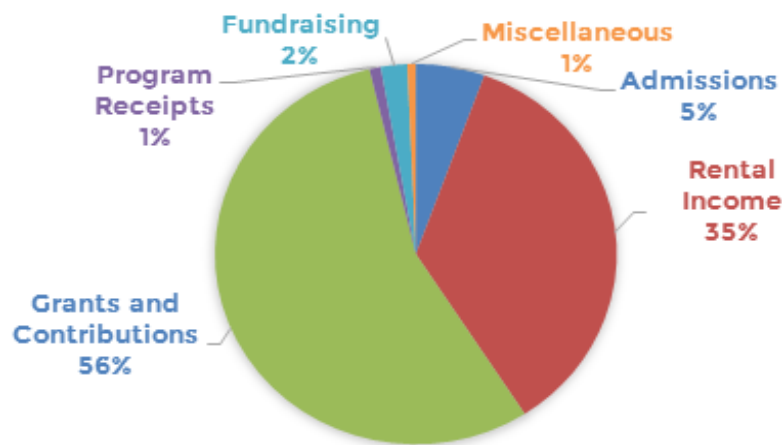
Expense	2016
Fundraiser Expense	55,875
Operating Expense	1,199,437
Property Tax Expense	818,852
Program Expense	172,079
Personnel Expense	2,162,777
Professional Services	211,819
Total Operating Expense	4,420,639
Total Capital Expense	1,145,585
Net Income	40,110



FINANCE & ADMINISTRATION

INCOME

Total income for 2016 is projected to be \$5,606,734, and breaks down as follows:



Major Grants, Contributions and Sponsorships (\$5,000+) include:

- Doris Duke Charitable Foundation* - \$2,942,000
- The Felicia Fund, Inc. - \$10,500
- City of Newport - \$15,500
- National Trust for Historic Preservation - \$5,000
- Preserve RI** - \$105,783
- Newport Marriott - \$10,000
- Roger Williams University - \$5,000
- Samuel & Ann Mencoﬀ - \$5,000
- James H. Ross - \$11,662
- Elizabeth Prince - \$10,031
- Edith S. McBean - \$7,700
- Robert Galkin - \$5,000

* funds restricted to Rough Point

** acting as fiscal agent

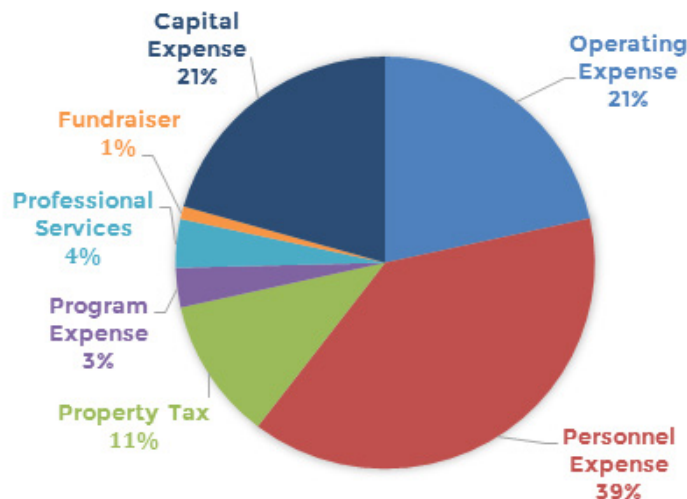
The Foundation's tenant stewardship program has a projected rental income for the year of \$1,946,492. In 2016, seven vacancies were filled with new tenants and by year end we will have 4 unfilled vacancies. We currently have over 200 prospective tenants on the wait list for the stewardship program.



FINANCE & ADMINISTRATION

EXPENSE

Total expense for 2016 is projected to be \$5,566,625, and breaks down as follows:



Program services includes the operations of Rough Point, Whitehorne Museum, Prescott Farm, the Keeping History Above Water conference, and our Tenant Stewardship program.

After serving the Foundation for 17 years, our Director of Preservation, Robert Foley, retired. A new Director of Preservation was hired in August. We also hired a new Marketing Coordinator this year and created two new positions, a full-time Special Assistant to the Executive Director and a part-time Staff Accountant. In addition, the search for a Director of Development is currently underway, which will assist us in fulfilling our many new and exciting initiatives.

This year we completed a major capital project, the installation of a new HVAC system at Rough Point. Other notable capital projects include: roof replacements at 2556 West Main Rd., 18 Thames St., and 35 Washington St., the installation of 4 boilers and a new fire alarm and intrusion system at Whitehorne Museum.

INVESTMENTS

As of October 31, 2016 NRF holds a total of \$6,985,819 in investments, of which \$5,912,618 is in a restricted museum collections account and \$1,073,201 is the preservation account.



WHO WE ARE

BOARD OF TRUSTEES

Mr. Armin Allen
Ms. Maia Farish
Mr. David Gordon
Mr. Thomas P. I. Goddard, *Vice President*
Dr. E. Roger Mandle, *President*

Ms. Edith McBean
Mr. Philip C. Marshall
Ms. Victoria Mele, *Secretary*
Mr. James H. Ross, *Treasurer*
Mrs. Marion Oates Charles, *Chair Emeritus*

STAFF

Pieter Nicholson Roos
Executive Director

Margot McIlwain Nishimura
Deputy Director of Collections,
Programming & Public Engagement

Sarah Reusché
Special Assistant to the Director

COLLECTIONS, EDUCATION & PUBLIC PROGRAMMING

Kristen Costa
Curator

Kelsey Mullen
Coordinator for Academic
Programs & Special Projects

Liz Spoden
Coordinator of Visitor Services
and Education Programs

PRESERVATION

Shantia Anderheggen
Director of Preservation

Sean Sullivan
Foreman of Preservation Properties

Brian McCarthy
Paint Supervisor

Marc Lennon
Heating & Maintenance Supervisor

Frank Amaral
Grounds & Gardens Supervisor

OPERATIONS & ADMINISTRATION

Amy Winsor
Director of Finance &
Administration

Maeve Sheehan
Human Resources Administrator

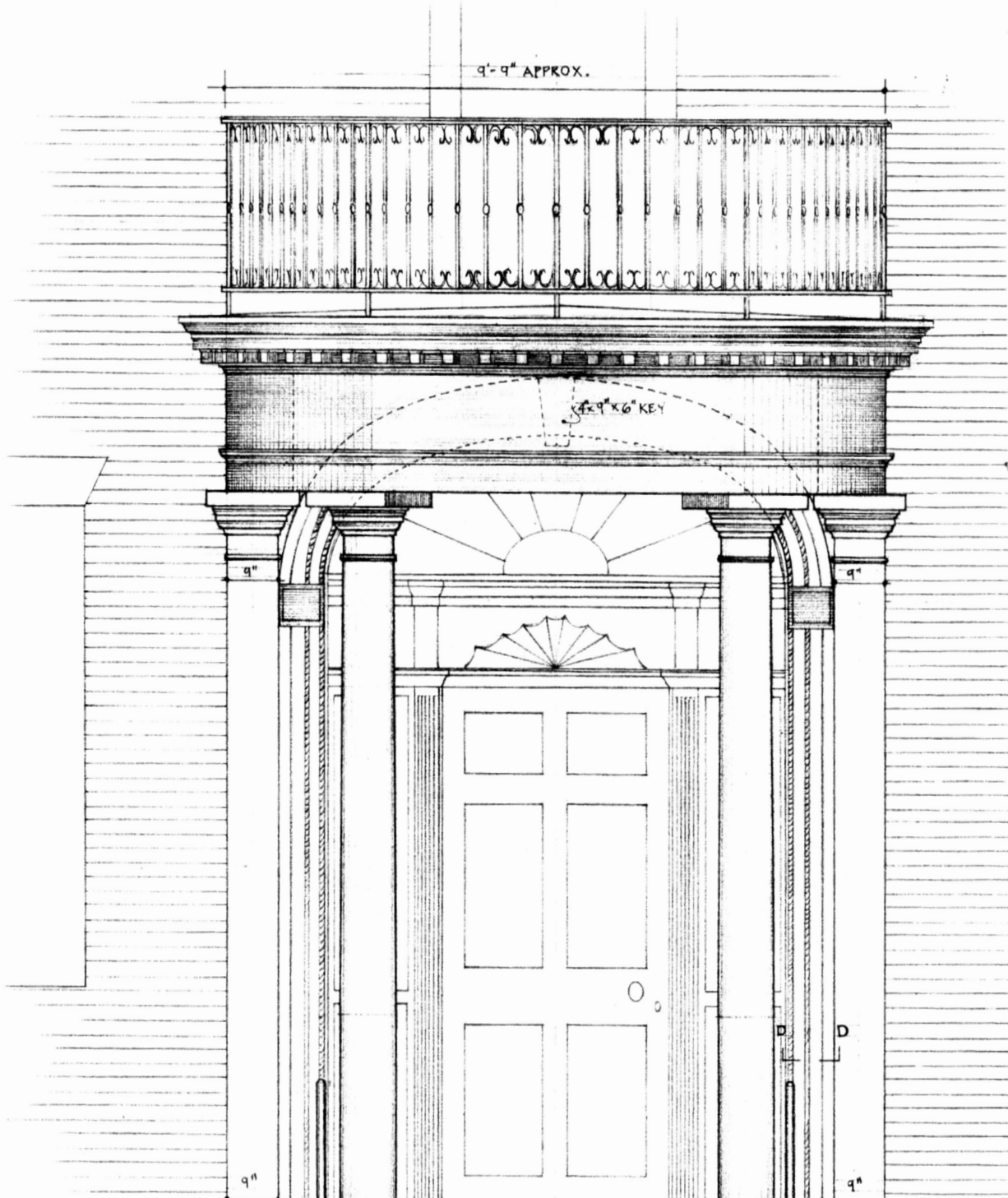
Barbara Schlubach
Operations Coordinator

Meaghan Barry
Marketing Coordinator



Founded in 1968, the Newport Restoration Foundation (NRF) is a non-profit institution dedicated to preserving, interpreting, and maintaining Aquidneck Island's 18th- and 19th-century architectural heritage and the fine and decorative arts collections of Doris Duke in Newport. NRF also supports research and education in areas that relate directly to its collections and to issues of critical concern to the field of historic preservation.





NEWPORT RESTORATION FOUNDATION

51 Touro Street
 Newport, RI 02840
 t 401.849.7300
 f 401.849.0125
www.newportrestoration.org

