



## 413 Thames Street, apartment # 2

CLARKE BURDICK HOUSE, c. 1835

This property (near Brown & Howard Wharf) is a two-family apartment house. The first floor unit opens onto and has exclusive rights to the small, enclosed yard. The second unit occupies the second and third floor, offering a possible second bedroom or office space on the third floor.. A stairwell near the north end of the structure gives access to all floors. Doric decorative door moldings accentuate all rooms. W/D hookups and storage space in the basement is allocated per unit. One off-street parking space provided per unit. Gas heat. Available immediately.

### ***Monthly Charges:***

**Rent – \$1,750.00**

**Fire alarm monitoring - \$20.00**

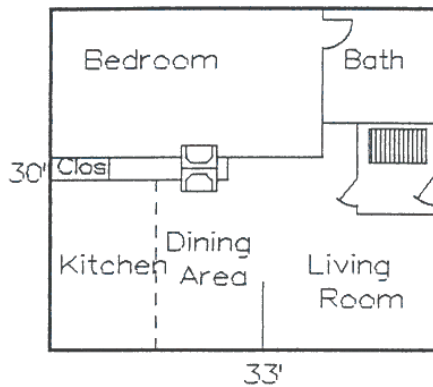
### ***Move in charges:***

**Security Deposit - \$1,750.00 (refundable)**

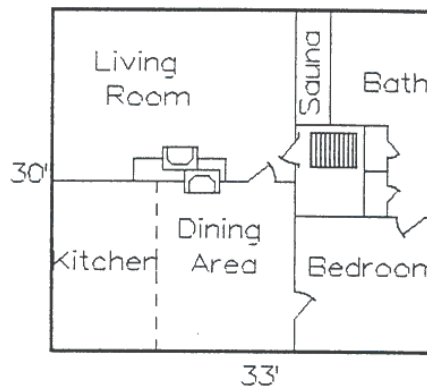
**Propertyware tenant screening fee - \$ 35.00**

413 Thames St.

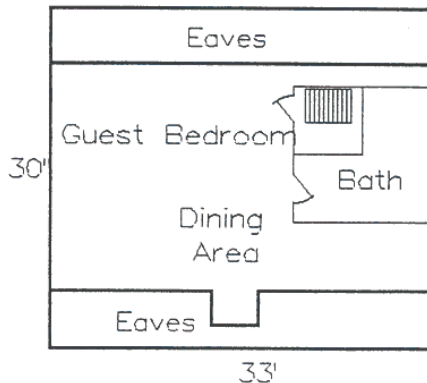
FIRST FLOOR



SECOND FLOOR



THIRD FLOOR



INTERIOR NOT TO SCALE



## 6 Cross Street

KING'S ARMS TAVERN, c.1720

This property is a large single family, center chimney colonial home of 3,200 square feet, with two stories and a partially finished attic. The exterior of the building is painted wood clapboard, stone foundation, and wood shingle hipped roof (newly reshingled in 2019). The property has a large yard with privacy fencing. The third floor offers a bedroom and bath. Basement has low head room. Gas heat. Available winter 2019.

### Monthly Charges

Rent: **\$3,500.00**

Fire Alarm monitoring: \$20.00

6 Cross St.

### Move-in charges

Background screening fee: \$35.00

Security deposit: \$3,500.00 (refundable)

