



413 Thames Street, apartment # 2

CLARKE BURDICK HOUSE, c. 1835

This property (near Brown & Howard Wharf) is a two-family apartment house. The first floor unit opens onto and has exclusive rights to the small, enclosed yard. The second unit occupies the second and third floor, offering a possible second bedroom or office space on the third floor.. A stairwell near the north end of the structure gives access to all floors. Doric decorative door moldings accentuate all rooms. W/D hookups and storage space in the basement is allocated per unit. One off-street parking space provided per unit. Gas heat. Available June 2019.

Monthly Charges:

Rent - \$1,800.00

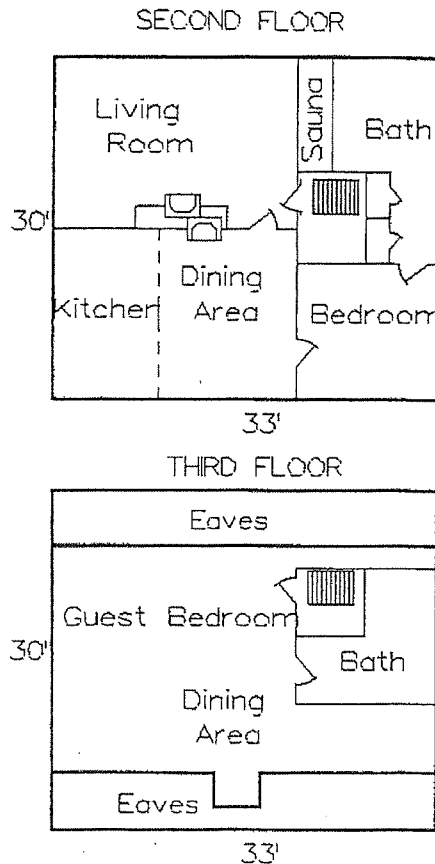
Fire alarm monitoring - \$20.00

Move in charges:

Security Deposit - \$1,800.00 (refundable)

Propertyware tenant screening fee - \$ 35.00

413 Thames St.



INTERIOR NOT TO SCALE