



SPECIALTY TOURS: THREE CENTURIES OF GARDENS

PRESCOTT FARM: KITCHEN GARDENING IN THE 18TH CENTURY

On Aquidneck Island in the 1700s, rural kitchen gardens were important sources of sustenance and financial support for farm families and their help. Planting the right vegetable at the right time meant being well-fed in the winter. Proper herbs provided medicine and even the flowers had both a decorative and a useful purpose. Taking inspiration from the 18th-century, Master Gardeners from the University of Rhode Island are growing abundant vegetables, herbs and flowers in a sustainable and organic manner. It is a fascinating blend of 21st-century techniques applied to heirloom varieties and historical gardening practices.

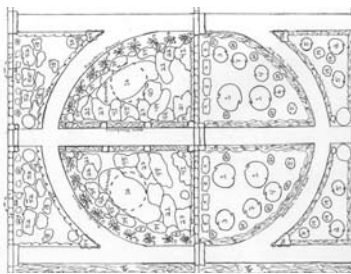


Rate: \$10 per person

Capacity: Min. 8 people, Max.25

Duration: ~ 30 minutes

WHITEHORNE HOUSE: URBAN GARDEN OF THE FEDERAL PERIOD



The Whitehorne House features some of the best examples of early Rhode Island furniture as well as recently redesigned formal gardens. In this lush, high-style garden, we will explore design elements and plant choices of the early 1800s. Even with its refined geometry and formal plant textures, it still has a rustic quality – an elegantly restrained wildness. Not surprisingly, because although aesthetic concerns were becoming increasingly important in the period, the garden still provided a utilitarian service for the house. From the precious balloon flower to the flamboyant castor plant, this garden will delight. Experience all the Whitehorne House has to offer by adding on a tour of the interior!

Rate: \$10 per person

Capacity: Min. 8 people, Max. 25

Duration: ~ 30 minutes

ROUGH POINT: A LANDSCAPE HISTORY & GARDEN TOUR

This garden and grounds tour takes you back over 200 years to a time when this part of Newport was active farmland. Experience the creation of the renowned father of landscape architecture, Frederick Law Olmsted, who initially designed the grounds at Rough Point for Frederick Vanderbilt in the 1890s. This tour will also reveal Newport’s development as one of America’s premier vacation destinations as reflected in its landscape, from the earliest period of summer cottages to the more formal estates built by America’s wealthiest families. Today, the Newport Restoration Foundation preserves the distinguished history of this landscape while providing visitors with exquisite gardens and breathtaking views. Observe all the beauty Rough Point has to offer by taking a tour of the house as well!



Rate: \$12 per person

Capacity: Min. 8 people, Max. 25

Duration: ~ 50 minutes

Come visit all three gardens for \$28 per person

Optional add-on: Coffee & pastries or hors d’oeuvres in one of the gardens (*price varies*) or groups may bring their own lunches to Prescott Farms for picnic table dining.

FOR INFORMATION OR RESERVATIONS:

Contact Lisa Dady, Director of Education and Public Programs, at (401) 324-6090 or lisa@newportrestoration.org